



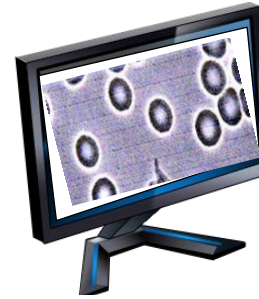
Take Your Health to the Next

Level in 2018... Only \$35

Super Thursday – January 11

LIVE CELL ANALYSIS \$35 SPECIAL!

Live Cell Analysis opens a fascinating window into your inner health. See the inner environment of your body LIVE and the activity of your own blood cells in living action! **Includes an On-The-Spot Full Color Copy of Your Instant Results.**



Only \$35 Reg. \$59.95

In Just 20 Minutes With a Virtually Painless Live Cell Analysis

- Learn how to Improve Your Digestion and Energy Level
- Learn Key Supplements to Boost Your Immunity
- See if you have Parasites or Leaky Gut Syndrome
- **Includes CANDIDA, PARASITE & GLUTEN SENSITIVITY Tests**
- See if you have Free Radical Damaged Red Blood Cells
- Learn how to Protect Yourself from Oxidative Stress
- Learn the Key Supplements That You Need The Most

**20% OFF
EVERYTHING
STOREWIDE!**

Excluding Special sales

You eat food to extract the right nutrients through proper digestion. But, if your body cannot digest, metabolize and properly eliminate food, it can contribute to toxicity, disease and illness. The live cell demonstration is designed to let you see first-hand the way in which your diet and lifestyle affects your health. This demonstration is an educational tool intended to help **inform and guide you towards a healthier diet and targeted supplementation** as you view your health on a cellular level.

CALL TODAY (813) 988-9444 or SIGN UP AT FRONT COUNTER

Chuck's Natural Fields Market

11301 N 56th St., Temple Terrace

Super Thursday – Jan. 11 • 10 AM to 7 PM

Call For Reservations – Openings Limited

Regular Price: \$59.95

Super Thursday Special: \$35

SAVE \$25.00

Compare at over \$100 Nationally